



SYNERGRAPHIC DESIGN PORTFOLIO BROCHURE

Categorized according to type of artwork and application



ABOUT SYNERGRAPHIC DESIGN

Synergraphic is a premier art+design studio that provides interior and architectural art glass solutions, bespoke lighting, installations, sculptures, features and murals, for indoor and outdoor spaces.

Since the company's formation in 1986, Synergraphic has remained at the forefront of cutting edge design, having created hundreds of features in glass and mixed media for projects in more than 15 countries – including St Regis Singapore, Partners Monument at Taipei 101 and the Crystal Pyramid in Brunei.

Synergraphic also provides a wide range of standard finishes, materials and glass elements to achieve excellent design concepts; and delivers interior pieces to make functional spaces work without compromising beauty. Our services include consultancy, art and design, prototyping, sourcing, installation, and more. We are committed to continually finding new means to increase the value of all kinds of spaces through glass and art.

Synergraphic is firmly dedicated to “The Art of Glass and All Things Beautiful”, and is the ideal partner for architects, designers and artists seeking to turn their visions into reality.

ABOUT THE DIRECTORS



Florence Ng

Founder and
Creative Director



Sara Ang

Director



4

Art

Intricately designed statements

49

Glass Interior

Artfully handcrafted elements for superb interiors

18

Feature & Installation

Three- dimensional pieces with texture and interaction

Sculpture

Lighting

Mural

ART

FEATURE & INSTALLATION

GLASS INTERIOR



Art

Add elegance and charm to your premises with our statements of art. Our versatile range of pieces are all created to meet your needs, creating a space to uniquely represent you.

SCULPTURE



Whistler Grand

Singapore

The drop-off's background takes its inspiration from a gently flowing river. This can be seen along the drop-off's wall and ceiling which are adorned with wave-like features.

Location

Singapore

Completed By

2022

Fabricated By

Synergraphic

Installed By

Synergraphic

Glass Processes Used

Mixed Media

Specific Materials Used

316 Stainless Steel

Artist

-

Designer

-

Architect

-

[- Download Full Brochure of This Project](#)
[- Go to Project Web Page](#)

SCULPTURE



Tapestry

Singapore

Made using cast glass blocks assembled into an overall figure of 8. Each glass block is of different sizes and colors, with some dichroic accents which ripple with the changing viewing angle. Metal wires are also woven through the sculpture.

Location

Singapore

Completed By

2021

Fabricated By

Synergraphic

Installed By

Synergraphic

Glass Processes Used

Cast Glass & Metal Works

Specific Materials Used

Glass Bricks
– Glass Elements

Artist

Florence Ng

Designer

–

Architect

–

[– Download Full Brochure of This Project](#)
[– Go to Project Web Page](#)

SCULPTURE



Coco Palms

Singapore

Dichroic Glass integrated in a palm leaf sculpture by Florence Ng.

Location

Singapore

Completed By

2018

Fabricated By

Synergraphic

Installed By

Synergraphic

Glass Processes Used

-

Specific Materials Used

Customized

Artist

Florence Ng

Designer

-

Architect

-

[- Go to Project Web Page](#)

SCULPTURE



People. Orion & Discovery

Singapore

The 19th of June saw the official opening of Seagate Technology's new S\$100 million dollar R&D center, and the completion of 3 stunning commissioned sculptural artworks – People, Orion and Discovery.

Location

Singapore

Completed By

2015

Fabricated By

Synergraphic

Installed By

–

Glass Processes Used

Bent Glass, Blown Glass,
Sandcarved, Metal Works

Specific Materials Used

Customized

Artist

Florence Ng,
Woo Meng Fye

Designer

–

Architect

–

[- Go to Project Web Page](#)

SCULPTURE



Sentosa Resort and Spa

Singapore

Location

Singapore

Completed By

2012

Fabricated By

Synergraphic

Installed By

-

Glass Processes Used

Waterjet, UV Glue

Specific Materials Used

Stacked Glass
- Glass Elements

Artist

-

Designer

-

Architect

-

[- Go to Project Web Page](#)

SCULPTURE



Aloft Hotels

Singapore

Location

Singapore

Completed By

2023

Fabricated By

Synergraphic

Installed By

Synergraphic

*Glass Processes Used**Specific Materials Used**Artist*

Synergraphic

Designer

-

Architect

-

[- Go to Project Web Page](#)

SCULPTURE

Le Jardin Anglais.
Montfort Centr

Singapore

Location

Singapore

Completed By

202`

Fabricated By

Synergraphic

Installed By

Synergraphic

Glass Processes Used

Specific Materials Used

Artist

-

Designer

-

Architect

-

[- Go to Project Web Page](#)

LIGHTING



Sculptural Chandelier

Singapore

Blown Glass feature lighting .

Location

Singapore

Completed By

2018

Fabricated By

Synergraphic

Installed By

Synergraphic

Glass Processes Used

Blown Glass

Specific Materials Used

Customized

Artist

-

Designer

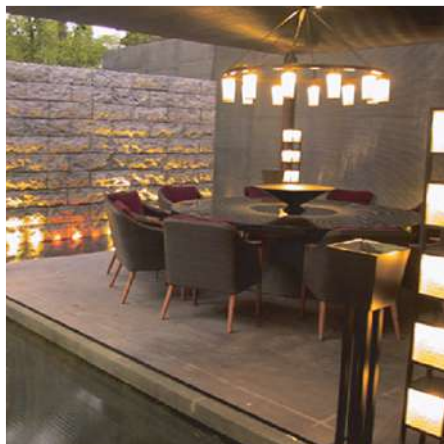
-

Architect

-

[- Go to Project Web Page](#)

LIGHTING



Beaufort Sentosa

Singapore

Etched patterned glass panels, Glass blocks light, Light fixtures and Candle holders.

Location

Singapore

Completed By

2007

Fabricated By

Synergraphic

Installed By

-

Glass Processes Used

-

Specific Materials Used

Glass Bricks

- Glass Elements

Artist

-

Designer

-

Architect

-

- [Go to Project Web Page](#)

LIGHTING



Private Residence O7

Singapore

Location

Singapore

Completed By

-

Fabricated By

Synergraphic

Installed By

-

Glass Processes Used

-

Specific Materials Used

-

Artist

-

Designer

-

Architect

-

[- Go to Project Web Page](#)

LIGHTING



Private Residence. Jalan Sejara

Singapore

Location

Singapore

Completed By

-

Fabricated By

Synergraphic

Installed By

-

Glass Processes Used

-

Specific Materials Used

-

Artist

-

Designer

-

Architect

Yumi Architects

- [Go to Project Web Page](#)

LIGHTING



Westin

Singapore

Location

Singapore

Completed By

-

Fabricated By

Synergraphic

Installed By

-

Glass Processes Used

-

Specific Materials Used

-

Artist

-

Designer

-

Architect

-

- [Go to Project Web Page](#)

MURAL



Banyan Tree

Macau

Image is printed as a 'base'. Combined with sandblasting of textures on surface, and hand-treatment by artists to create more 'depth' in the feature.

Location

Macau

Completed By

2011

Fabricated By

Synergraphic

Installed By

-

Glass Processes Used

-

Specific Materials Used

Customized

Artist

-

Designer

-

Architect

-

[- Go to Project Web Page](#)



Feature & Installation

Add dimension to your spaces with immersive, three-dimensional installations. These pieces spark interest and emotions in others, transforming perceptions of a space as it conveys the artistry of the piece.

CEILING FEATURE



Holiday Inn Express

Singapore

Printing on other materials such as barrisol and metal.

Production artwork developed by our team.

Location

Singapore

Completed By

2009

Fabricated By

Synergraphic

Installed By

-

Glass Processes Used

Digital Printing

Specific Materials Used

Customized

Artist

-

Designer

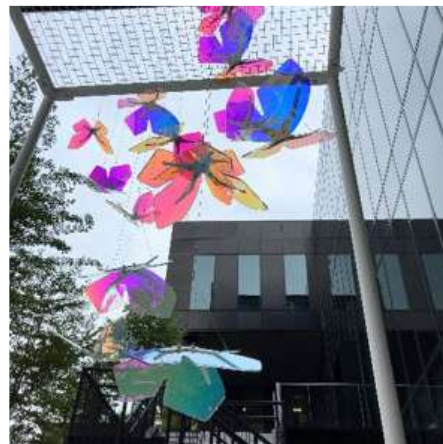
-

Architect

-

[- Go to Project Web Page](#)

CEILING FEATURE



Changi Airport Jewel

Singapore

Location

Singapore

Completed By

2019

Fabricated By

Synergraphic

Installed By

-

Glass Processes Used

Dichroic Glass

Specific Materials Used

Customized

Artist

-

Designer

-

Architect

-

[- Go to Project Web Page](#)

CEILING FEATURE



Flutes of Fancy

Singapore

"Flutes of Fancy" is a magical chandelier sculpture beautifully composed of glass and acrylic pieces and crystal beads by Florence Ng.

Location

Singapore

Completed By

2014

Fabricated By

Synergraphic

Installed By

-

Glass Processes Used

-

Specific Materials Used

Bent Glass

Artist

-

Designer

-

Architect

-

[- Go to Project Web Page](#)

CEILING FEATURE



Feng Shui Restaurant. Crocks Ford Hotel

Singapore

Location

Singapore

Completed By

2015

Fabricated By

Synergraphic

Installed By

-

Glass Processes Used

Printed Glass, Blown Glass

Specific Materials Used

Customized

Artist

-

Designer

-

Architect

-

[- Go to Project Web Page](#)

CEILING FEATURE



Westin

Singapore

Location

Singapore

Completed By

-

Fabricated By

Synergraphic

Installed By

-

Glass Processes Used

-

Specific Materials Used

-

Artist

-

Designer

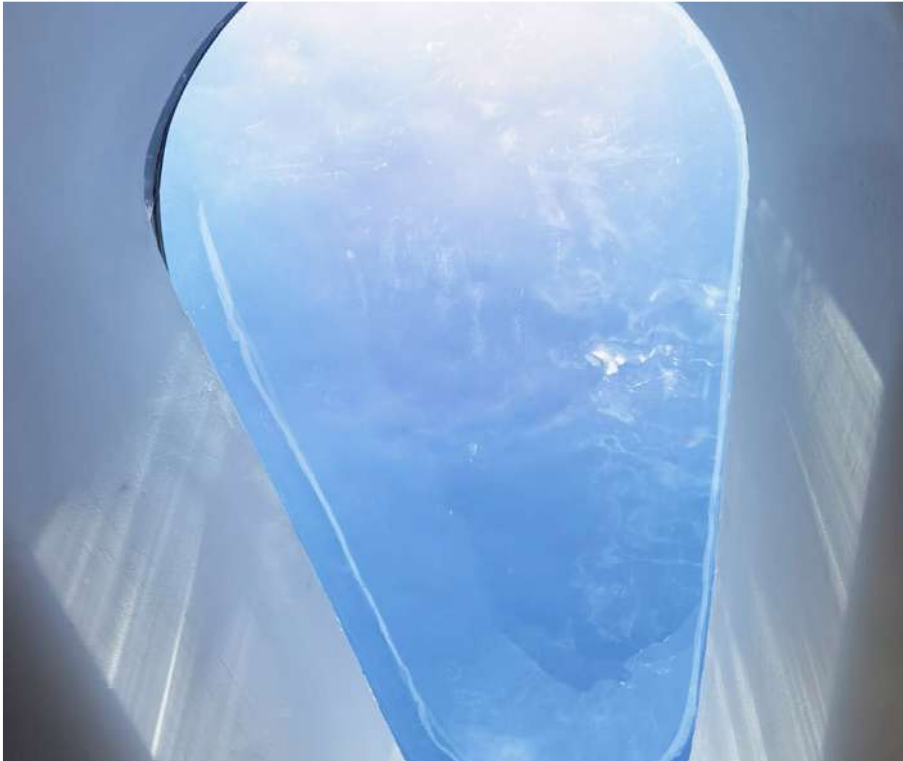
-

Architect

-

- [Go to Project Web Page](#)

CEILING FEATURE



Skylight. Lermit Road

Singapore

Location

Singapore

Completed By

-

Fabricated By

Synergraphic

Installed By

-

Glass Processes Used

Kilnformed Glass

Specific Materials Used

-

Artist

-

Designer

-

Architect

-

[- Go to Project Web Page](#)

CEILING FEATURE



Sri Lanka Dome

Singapore

Location

Sri Lanka

Completed By

-

Fabricated By

Synergraphic

Installed By

-

Glass Processes Used

-

Specific Materials Used

-

Artist

-

Designer

-

Architect

-

[- Go to Project Web Page](#)

CEILING FEATURE



Leaded Stained Glass. Capitol Kempinski Singapore

Location

Singapore

Completed By

-

Fabricated By

Synergraphic

Installed By

-

Glass Processes Used

Stained Glass

Specific Materials Used

Stained Glass

Artist

-

Designer

-

Architect

-

- [Go to Project Web Page](#)

CEILING FEATURE



National University of Singapore

Singapore

Acoustic felt panels ceiling

Location

Singapore

Completed By

-

Fabricated By

Synergraphic

Installed By

-

Glass Processes Used

-

Specific Materials Used

-

Artist

-

Designer

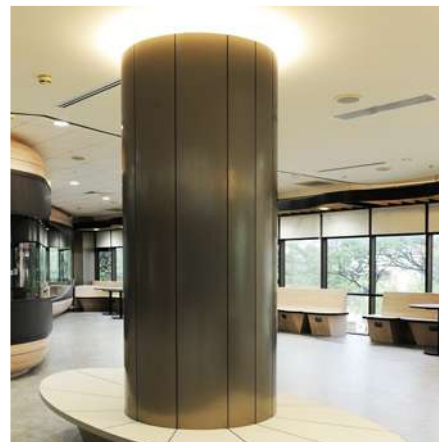
-

Architect

-

- [Go to Project Web Page](#)

CEILING FEATURE



National University of Singapore

Singapore

Aluminum baffle ceiling

Location

Singapore

Completed By

-

Fabricated By

Synergraphic

Installed By

-

Glass Processes Used

-

Specific Materials Used

-

Artist

-

Designer

-

Architect

-

- [Go to Project Web Page](#)

WALL FEATURE



The St Regis Singapore

Singapore

Beveled Crystal Glass Flowers for Grand Entrance and Stained Glass Skylight for All Day Dining.

Location

Singapore

Completed By

2018

Fabricated By

Synergraphic

Installed By

-

Glass Processes Used

Beveled Crystal Cut Glass,
Stained Glass, Metal works

Specific Materials Used

Customized

Artist

-

Designer

-

Architect

-

[- Go to Project Web Page](#)

WALL FEATURE



Taj Gurgaon

India

Two 14-metre high sculptural lattice features made with hexagonal patterns & delicate flower motifs.

Location

India

Completed By

2012

Fabricated By

Synergraphic

Installed By

-

Glass Processes Used

Waterjet, UV Glue, Sandblast,
Bevel, Crystal cut

Specific Materials Used

Customized

Artist

-

Designer

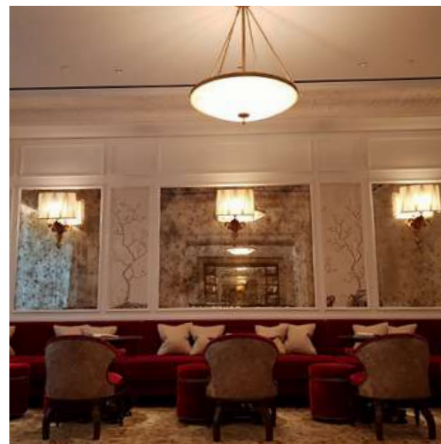
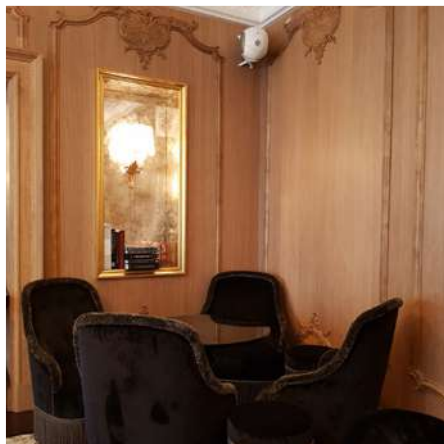
-

Architect

-

- [Go to Project Web Page](#)

WALL FEATURE



Six Senses Maxwell

Singapore

Location

Singapore

Completed By

-

Fabricated By

Synergraphic

Installed By

Synergraphic

*Glass Processes Used*Eglomise & Antique
Mirror & Artist-textured
and gilded glass*Specific Materials Used*

Customized

Artist

-

Designer

Moya Design

Architect

Moya Design

[- Go to Project Web Page](#)

WALL FEATURE



Duxton Hotel

Singapore

Stained glass ceiling and wall, stained glass canopy and lift interiors including mirrors.

Location

Singapore

Completed By

2018

Fabricated By

Synergraphic

Installed By

-

Glass Processes Used

Stained Glass

Specific Materials Used

-

Artist

-

Designer

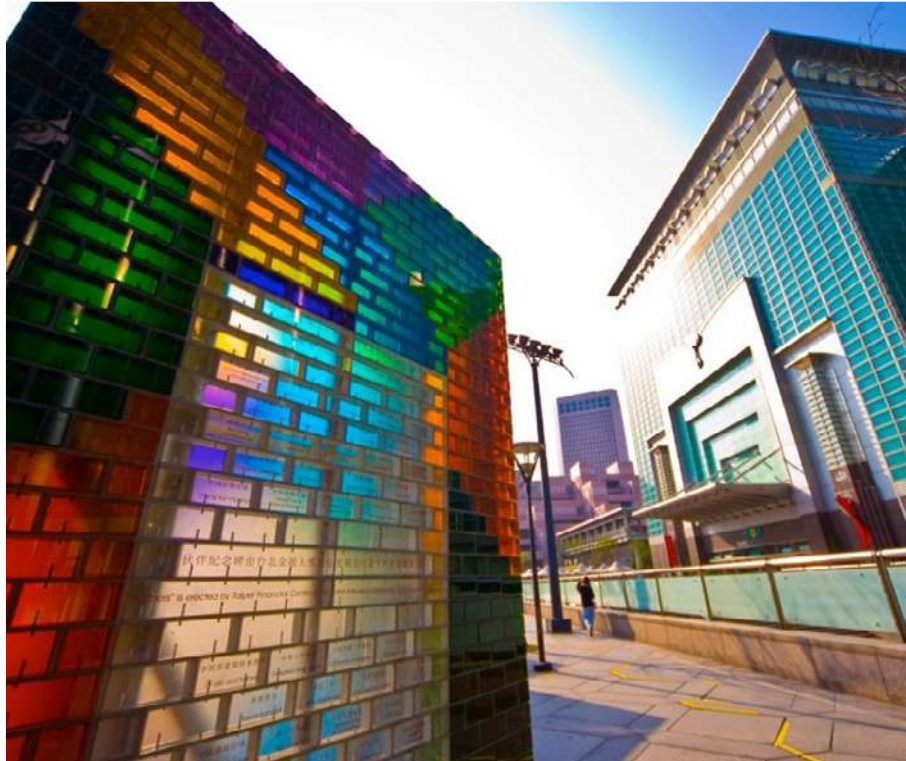
-

Architect

-

[- Go to Project Web Page](#)

WALL INSTALLATION



Taipei 101

Taiwan

The commission was to create a monument – conceived by well-known architectural firm C Y Lee – out of glass based on the concept of the Chinese tangram, a geometrical puzzle comprising seven different shapes.

Location

Taiwan

Completed By

2007

Fabricated By

Synergraphic

Installed By

-

Glass Processes Used

Cast Glass, Sandcarving

Specific Materials Used

Glass Bricks

- Glass Elements

Artist

-

Designer

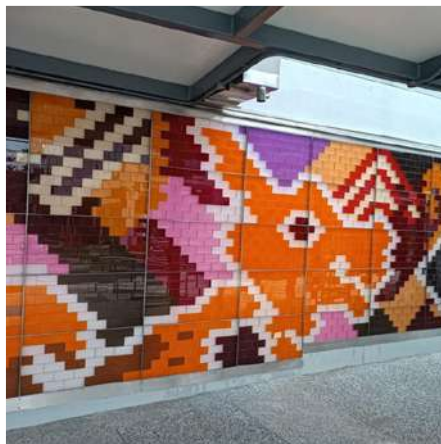
-

Architect

-

[- Go to Project Web Page](#)

WALL INSTALLATION



One Holland Village. Singapore

Nostalgia is a unique lego-inspired installation paying homage to the old playgrounds that once adorned the landscapes of Singapore.

Location

Taiwan

Completed By

2023

Fabricated By

Synergraphic

Installed By

-

Glass Processes Used

-

Specific Materials Used

-

Artist

-

Designer

-

Architect

-

[- Go to Project Web Page](#)

WALL INSTALLATION



Resplendent Wealth

Singapore

Wall feature by artist Goh Beng Kwan emanating an abundance of colour & light.

Location

Singapore

Completed By

2018

Fabricated By

Synergraphic

Installed By

-

Glass Processes Used

Mixed media

Specific Materials Used

Customized

Artist

-

Designer

-

Architect

-

[- Go to Project Web Page](#)

WALL INSTALLATION



Forbidden Duck

Singapore

Location

Singapore

Completed By

-

Fabricated By

Synergraphic

Installed By

-

Glass Processes Used

-

Specific Materials Used

-

Artist

-

Designer

-

Architect

-

[- Go to Project Web Page](#)

WALL INSTALLATION



Ritz Carlton

Singapore

Location

Singapore

Completed By

2022

Fabricated By

Synergraphic

Installed By

-

*Glass Processes Used*2 way view, Eglomise,
Lamination & Palladium Leaf*Specific Materials Used*

Customized

Artist

Lisa Stimpson

Designer

-

Architect

-

[- Go to Project Web Page](#)

WALL INSTALLATION

Bread Street Kitchen.
Marina Bay Sands

Singapore

Location

Singapore

Completed By

2022

Fabricated By

Synergraphic

Installed By

Synergraphic

Glass Processes Used

Lamination

*Specific Materials Used*Patterned Glass,
Laminated Glass Screens
& Printed Pattern*Artist*

-

Designer

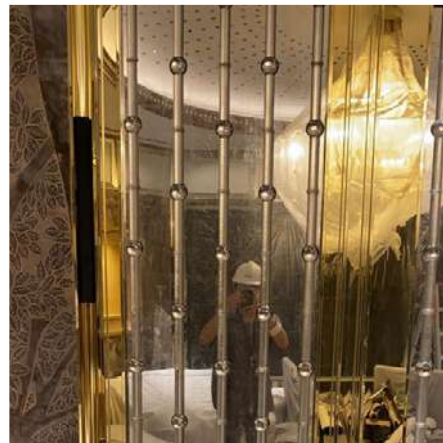
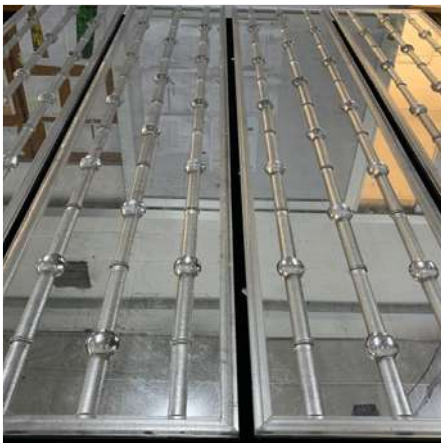
-

Architect

-

[- Go to Project Web Page](#)

WALL INSTALLATION



Venetian Paiza

Macau

Location

Macau

Completed By

-

Fabricated By

Synergraphic

Installed By

-

*Glass Processes Used*Gilded glass panels
& Gilded cast glass panels*Specific Materials Used*

Customized

Artist

-

Designer

-

Architect

-

[- Go to Project Web Page](#)

WALL INSTALLATION



Private Residence O1

Singapore

Location

Singapore

Completed By

-

Fabricated By

Synergraphic

Installed By

-

Glass Processes Used

Sandblasted artwork, and
birds evolving from 2D to 3D
form, with gilded accents

Specific Materials Used

Customized

Artist

-

Designer

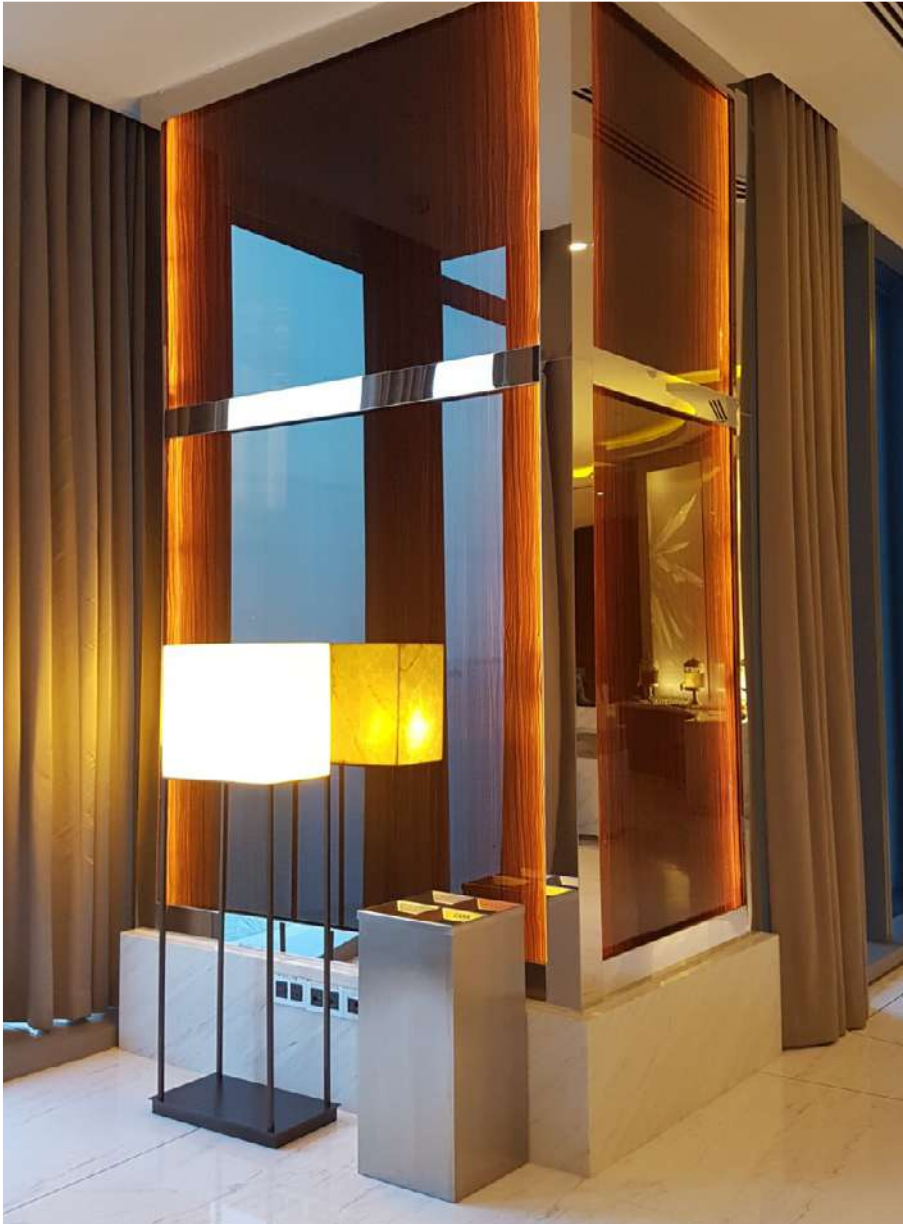
-

Architect

-

[- Go to Project Web Page](#)

WALL INSTALLATION



Westin

Singapore

Location

Singapore

Completed By

-

Fabricated By

Synergraphic

Installed By

-

Glass Processes Used

-

Specific Materials Used

-

Artist

-

Designer

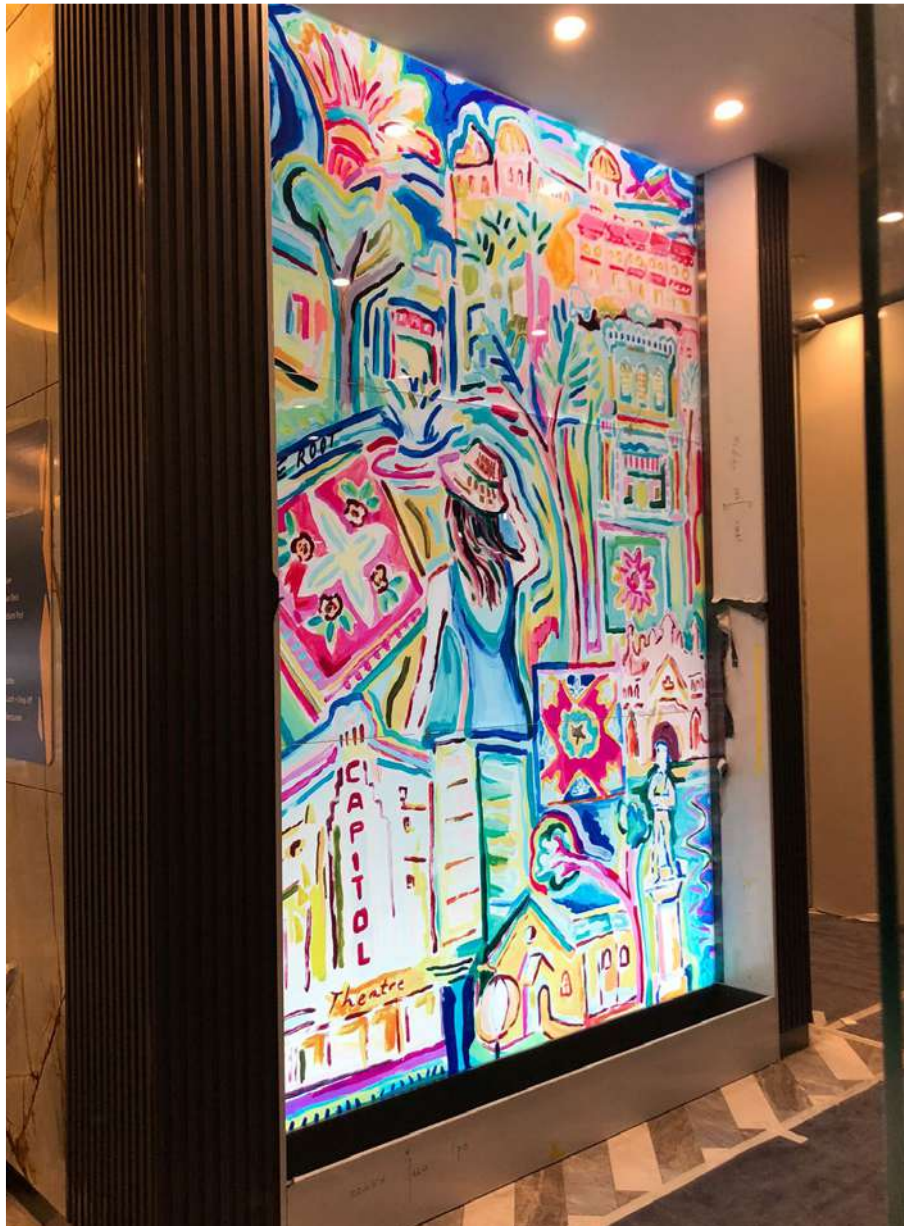
-

Architect

-

- [Go to Project Web Page](#)

WALL INSTALLATION



Hotel Mi Rochor

Singapore

Location

Singapore

Completed By

2023

Fabricated By

Synergraphic

Installed By

Synergraphic

Glass Processes Used

-

Specific Materials Used

-

Artist

Ripple Root

Designer

-

Architect

-

[- Go to Project Web Page](#)

WALL INSTALLATION



Cle De Peau

Japan

Location

Japan

Completed By

2019

Fabricated By

Synergraphic

Installed By

Synergraphic

Glass Processes Used

-

Specific Materials Used

-

Artist

Ripple Root

Designer

-

Architect

-

[- Go to Project Web Page](#)

WATER FEATURE



Royal Dance

Singapore

Blown & fused sculptures Created by Florence Ng.

Location

Singapore

Completed By

2018

Fabricated By

Synergraphic

Installed By

-

*Glass Processes Used*Blown Glass,
UV Glued, Fused*Specific Materials Used*

Customized

Artist

-

Designer

-

Architect

-

[- Go to Project Web Page](#)

WATER FEATURE



Livia Condominium

Singapore

Water feature that interacts with weather's shifting light.

Location

Singapore

Completed By

2011

Fabricated By

Synergraphic

Installed By

–

Glass Processes Used

Glass and Metal

Specific Materials Used

Customized

Artist

–

Designer

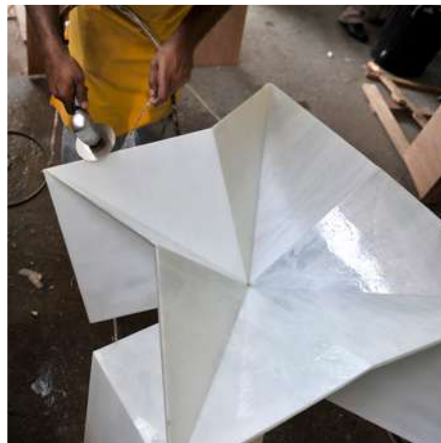
–

Architect

–

[- Go to Project Web Page](#)

WATER FEATURE



Floating Origami

Singapore

Origami-Inspired illuminated Water Feature.

Location

Singapore

Completed By

2010

Fabricated By

Synergraphic

Installed By

–

Glass Processes Used

Mixed Media

Specific Materials Used

Customized

Artist

–

Designer

–

Architect

–

[- Go to Project Web Page](#)

WATER FEATURE



The Sail

Singapore

Location

Singapore

Completed By

-

Fabricated By

Synergraphic

Installed By

-

Glass Processes Used

-

Specific Materials Used

-

Artist

-

Designer

-

Architect

-

[- Go to Project Web Page](#)

WATER FEATURE



Pullman Resort

Maldives

Location

Maldives

Completed By

-

Fabricated By

Synergraphic

Installed By

-

Glass Processes Used

-

Specific Materials Used

-

Artist

-

Designer

-

Architect

-

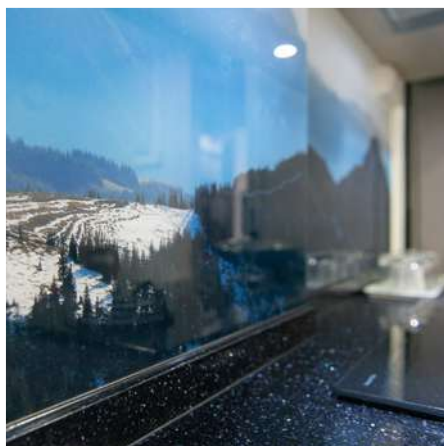
[- Go to Project Web Page](#)



Glass Interior

Meticulously designed and artfully handcrafted elements for superb interiors

BACKSPLASH



Private Residence 09

Singapore

Misty Mountain – ATMOS Collection*Location*

Singapore

Completed By

2020

Fabricated By

Synergraphic

Installed By

Synergraphic

Glass Processes Used

Digital printing

*Specific Materials Used*Misty Mountain
– ATMOS Collection*Artist*

–

Designer

–

Architect

–

[- Go to Project Web Page](#)

BACKSPLASH



Private Residence 10

Singapore

Mountainscape - ATMOS Collection*Location*

Singapore

Completed By

2019

Fabricated By

Synergraphic

Installed By

Synergraphic

Glass Processes Used

Digital printing

*Specific Materials Used*Mountainscape
- ATMOS Collection*Artist*

-

Designer

-

Architect

-

[- Go to Project Web Page](#)

BACKSPLASH



Private Residence 11

Singapore

Bamboo Forest - ATMOS Collection*Location*

Singapore

Completed By

-

Fabricated By

Synergraphic

Installed By

Synergraphic

Glass Processes Used

Digital printing

*Specific Materials Used*Bamboo Forest
- ATMOS Collection*Artist*

-

Designer

-

Architect

-

[- Go to Project Web Page](#)

BACKSPLASH



Private Residence 12

Singapore

Tempest - Earth Tales Vol I Collection*Location*

Singapore

Completed By

2020

Fabricated By

Synergraphic

Installed By

Synergraphic

Glass Processes Used

Digital printing

Specific Materials Used

Tempest - Earth Tales Vol I

Artist

-

Designer

-

Architect

-

[- Go to Project Web Page](#)

BACKSPLASH



Private Residence 13

Singapore

Singapore Treasures – Talking Textiles Collection*Location*

Singapore

Completed By

2019

Fabricated By

Synergraphic

Installed By

Synergraphic

Glass Processes Used

Digital printing

*Specific Materials Used*Singapore Treasures
– Talking Textiles*Artist*

–

Designer

–

Architect

–

[- Go to Project Web Page](#)

BACKSPLASH



Private Residence 14

Singapore

Dodang - Culture Collection*Location*

Singapore

Completed By

2019

Fabricated By

Synergraphic

Installed By

Synergraphic

Glass Processes Used

Digital printing

*Specific Materials Used*Dodang
- Culture Collection*Artist*

-

Designer

-

Architect

-

[- Go to Project Web Page](#)

BACKSPLASH



Private Residence 15

Singapore

Kueh Tile - Onlewo Collection*Location*

Singapore

Completed By

-

Fabricated By

Synergraphic

Installed By

Synergraphic

Glass Processes Used

Digital printing

*Specific Materials Used*Kueh Tile
- Onlewo Collection*Artist*

-

Designer

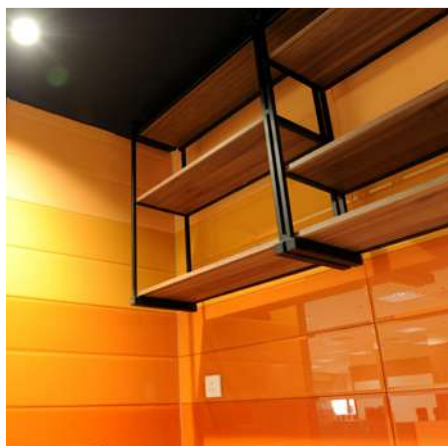
-

Architect

-

[- Go to Project Web Page](#)

BACKSPLASH



National University of Singapore

Singapore

Backpainted glass backsplash

Location

Singapore

Completed By

-

Fabricated By

Synergraphic

Installed By

-

Glass Processes Used

-

Specific Materials Used

-

Artist

-

Designer

-

Architect

-

- [Go to Project Web Page](#)

BACKSPLASH



Private Residence.
Swanage Road Singapore
Singapore

<i>Location</i>	<i>Completed By</i>	<i>Fabricated By</i>
Singapore	2023	Synergraphic
<i>Installed By</i>	<i>Glass Processes Used</i>	<i>Specific Materials Used</i>
-	-	-
<i>Artist</i>	<i>Designer</i>	<i>Architect</i>
-	-	-

- [Go to Project Web Page](#)

DOOR



Private Residence. Sentosa Cove

Singapore

Location

Singapore

Completed By

2023

Fabricated By

Synergraphic

Installed By

-

Glass Processes Used

-

Specific Materials Used

-

Artist

-

Designer

-

Architect

-

[- Go to Project Web Page](#)

ENCLOSURE



South Restaurant. Marina Bay Sands Skypark

Singapore

Location

Singapore

Completed By

2010

Fabricated By

Synergraphic

Installed By

-

Glass Processes Used

Digital printing

Specific Materials Used

Customized

Artist

-

Designer

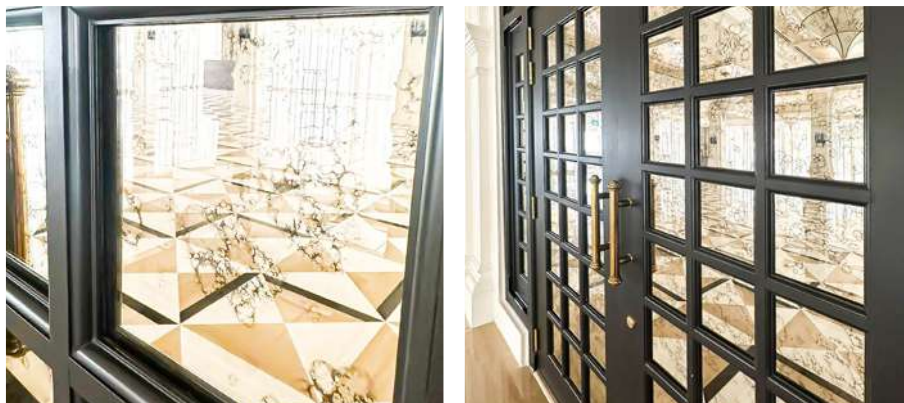
-

Architect

-

[- Go to Project Web Page](#)

ENCLOSURE / DOOR

Doors/Enclosures in Main Ballroom.
Raffles Hotel

Singapore

Raffles Singapore has gained a mark of incomparable elegance in the Hospitality industry in Singapore and the region – not only because of its graceful service but also because of its striking architecture. We had the privilege to be part of some of its great interiors in their Main Ballroom. We created for them eglomise glass panels as feature walls and antique mirror for their doors and enclosures.

Location

Singapore

Completed By

-

Fabricated By

Synergraphic

Installed By

-

Glass Processes Used

-

Specific Materials Used

Antique Mirrors

Artist

-

Designer

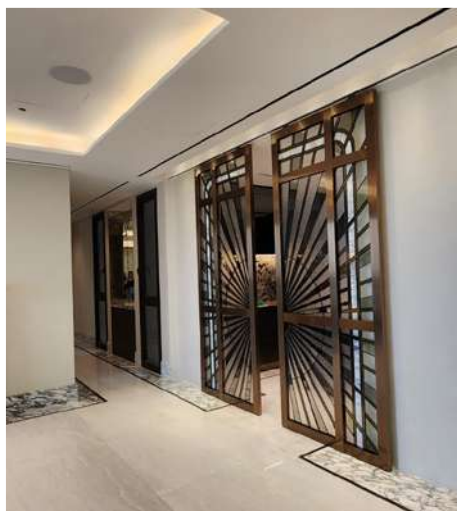
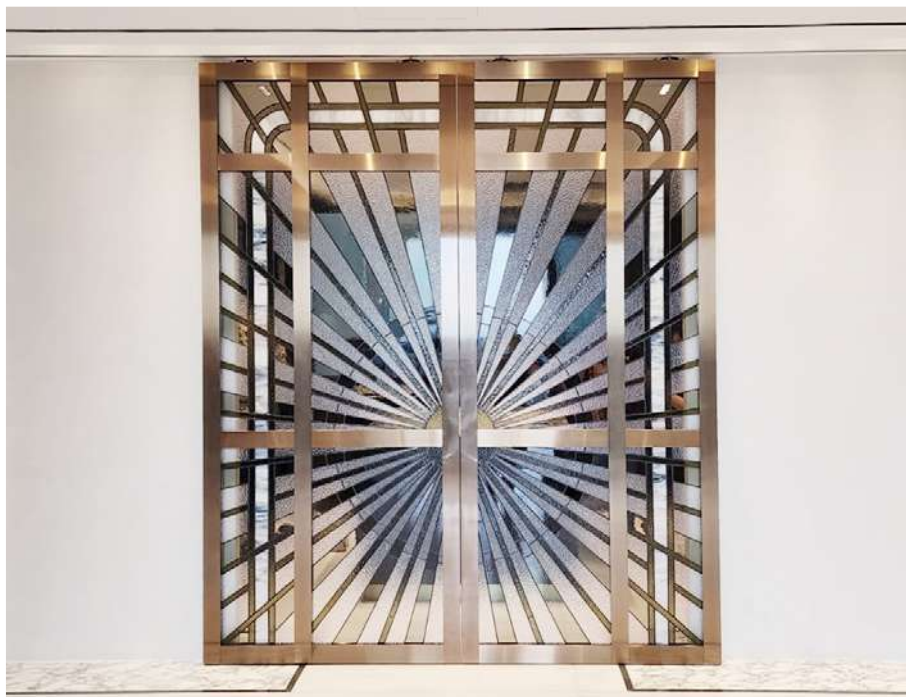
-

Architect

-

[- Go to Project Web Page](#)

ENCLOSURE / DOOR

Private Residence.
Ardmore Park

Singapore

Location

Singapore

Completed By

2023

Fabricated By

Synergraphic

Installed By

-

Glass Processes Used

-

Specific Materials Used

Stained Glass

Artist

-

Designer

Project Innovations

Architect

-

[- Go to Project Web Page](#)

ENCLOSURE / DOOR



Private Residence O5

Singapore

Location

Singapore

Completed By

-

Fabricated By

Synergraphic

Installed By

-

Glass Processes Used

Laminated Glass

Specific Materials Used

-

Artist

-

Designer

-

Architect

-

[- Go to Project Web Page](#)

ENCLOSURE / DOOR

Private Residence.
Margoliouth Road

Singapore

Location

Singapore

Completed By

2023

Fabricated By

Synergraphic

Installed By

-

Glass Processes Used

Laminated Glass

Specific Materials Used

-

Artist

-

Designer

-

Architect

-

[- Go to Project Web Page](#)

FEATURE WALL



Photo credits: Atmosphere In Burj Khalifa



Atmosphere. Burj Khalifa

Dubai

We recently completed glass panels and feature walls for Atmosphere, an upscale fine dining restaurant and bar on floor 122 of the iconic Burj Khalifa skyscraper in Dubai. Along with the finest hand crafted delicacies & incredible views of the Gulf the restaurant offers is the great interiors which we are part of. Using antique mirrors and other various types of glass and processes, we were able to achieve and deliver walls and surfaces with bejeweled effect.

Location

Dubai

Completed By

2023

Fabricated By

Synergraphic

Installed By

-

Glass Processes Used

-

Specific Materials Used

-

Artist

-

Designer

1508 London

Architect

-

[- Go to Project Web Page](#)

FEATURE WALL

Private Residence.
MacPherson

Singapore

Location

Singapore

Completed By

2023

Fabricated By

Synergraphic

Installed By

-

Glass Processes Used

-

Specific Materials Used

-

Artist

-

Designer

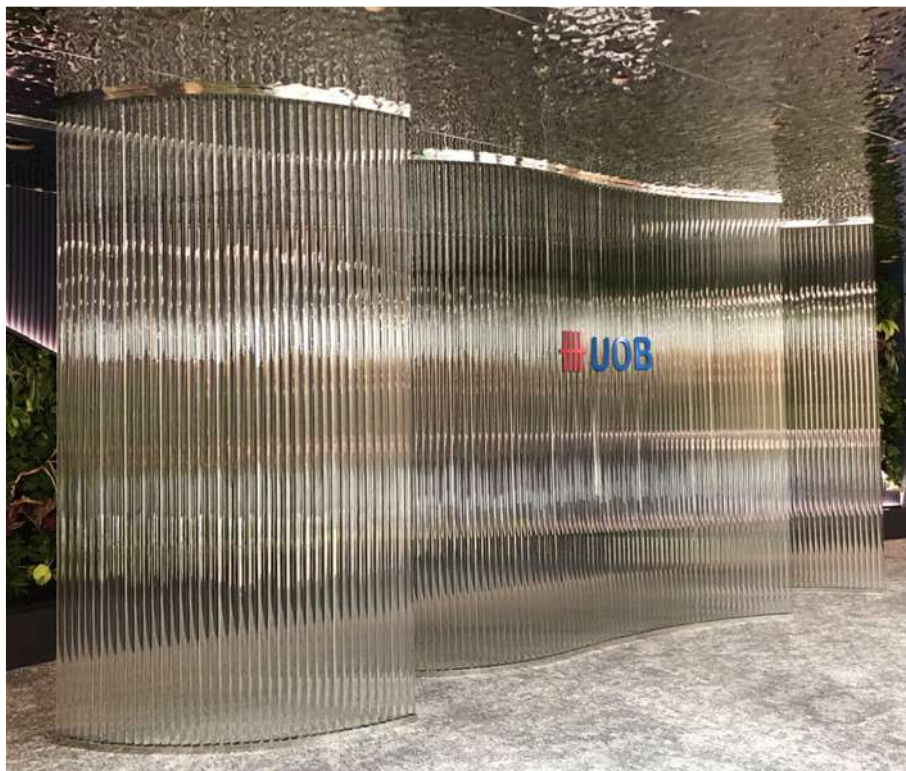
-

Architect

-

[- Go to Project Web Page](#)

FEATURE WALL



UOB Singapore

Singapore

Location

Singapore

Completed By

2023

Fabricated By

Synergraphic

Installed By

Synergraphic

Glass Processes Used

-

Specific Materials Used

-

Artist

-

Designer

-

Architect

-

[- Go to Project Web Page](#)

FEATURE WALL



Ocean Restaurant. Resorts World (RWS)

Singapore

Location

Singapore

Completed By

2022

Fabricated By

Synergraphic

Installed By

Synergraphic

Glass Processes Used

Glass bricks

Specific Materials Used

Glass bricks

Artist

-

Designer

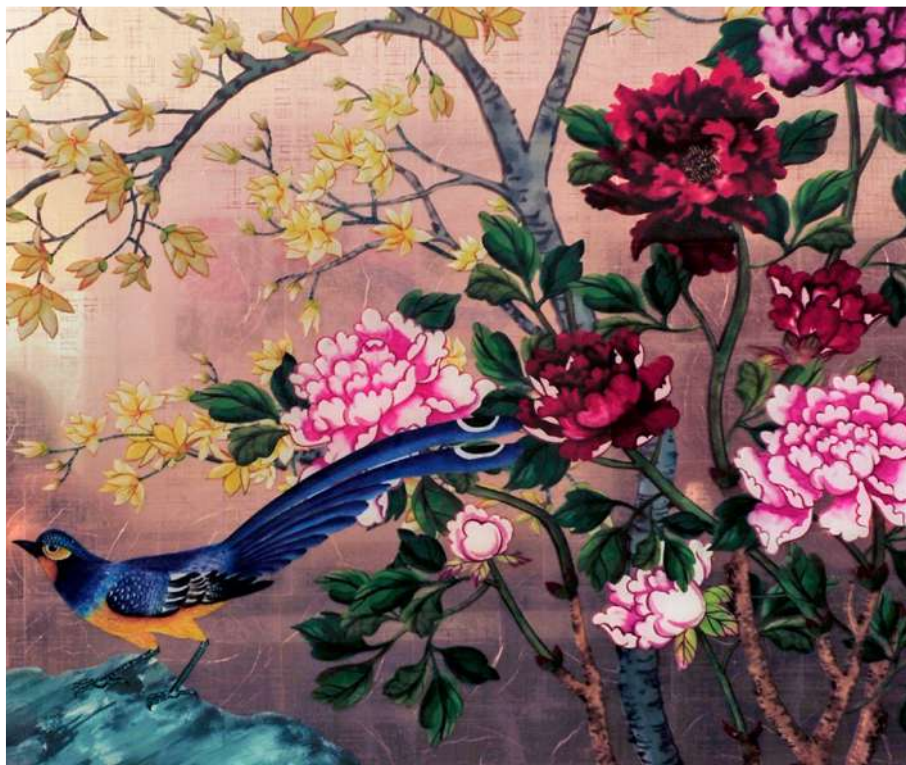
-

Architect

-

[- Go to Project Web Page](#)

FEATURE WALL



Macau Theme Park Resort

Macau

Here's an extravagant collection of chinoiserie glass panels at this Casino. The extensive use of intricate patterns and elegant motifs exudes a perfect royal oriental feel.

Location

Macau

Completed By

2020

Fabricated By

Synergraphic

Installed By

–

Glass Processes Used

Artist-drawn,
digital printed, gilded

Specific Materials Used

Customized

Artist

–

Designer

–

Architect

–

[- Go to Project Web Page](#)

FEATURE WALL



City of Dreams

Macau

Made of Cast glass 'lenses' of varying sizes and finishes

Location

Macau

Completed By

2020

Fabricated By

Synergraphic

Installed By

-

*Specific Materials Used**Artist*

-

Designer

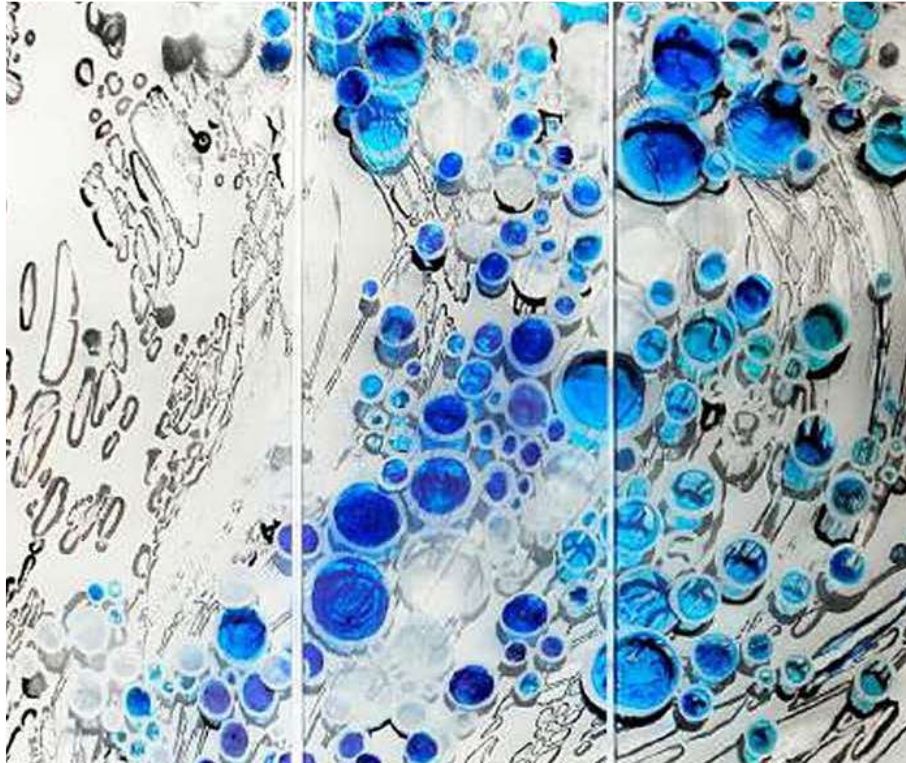
-

Architect

-

[- Go to Project Web Page](#)

FEATURE WALL



HM-Solarium Deck

International

Image is printed as a 'base'. Combined with sandblasting of textures on surface, and hand-treatment by artists to create more 'depth' in the feature.

Location

-

Completed By

2011

Fabricated By

Synergraphic

Installed By

-

Glass Processes Used

Digital Printing

Specific Materials Used

Customized

Artist

-

Designer

-

Architect

-

[- Go to Project Web Page](#)

FEATURE WALL



Quaich Bar. Hotel Intercontinental Singapore

Stained glass feature wall

Quaich Bar is one of the most exquisite whisky bars that you will find in Singapore. Formerly known as the Victoria Bar, it is the oldest bar in Singapore that has set the standards of whisky enjoyment and appreciation in the country. Our contribution to the bar's excellent interiors includes glass cladding for their whisky shelves, antique mirror made into a feature wall, and stained glass features.

Location

Singapore

Completed By

-

Fabricated By

Synergraphic

Installed By

Synergraphic

Glass Processes Used

Antique Mirror

Specific Materials Used

-

Artist

-

Designer

-

Architect

-

[- Go to Project Web Page](#)

FEATURE WALL



Quaich Bar. Hotel Intercontinental Singapore

Antique mirror feature wall

Quaich Bar is one of the most exquisite whisky bars that you will find in Singapore. Formerly known as the Victoria Bar, it is the oldest bar in Singapore that has set the standards of whisky enjoyment and appreciation in the country. Our contribution to the bar's excellent interiors includes glass cladding for their whisky shelves, antique mirror made into a feature wall, and stained glass features.

Location

Singapore

Completed By

-

Fabricated By

Synergraphic

Installed By

Synergraphic

Glass Processes Used

Antique Mirror

Specific Materials Used

-

Artist

-

Designer

-

Architect

-

[- Go to Project Web Page](#)

FEATURE WALL



Qatar Airways Lounge. Changi Airport

Singapore

Location

Singapore

Completed By

-

Fabricated By

Synergraphic

Installed By

Synergraphic

Glass Processes Used

-

Specific Materials Used

-

Artist

-

Designer

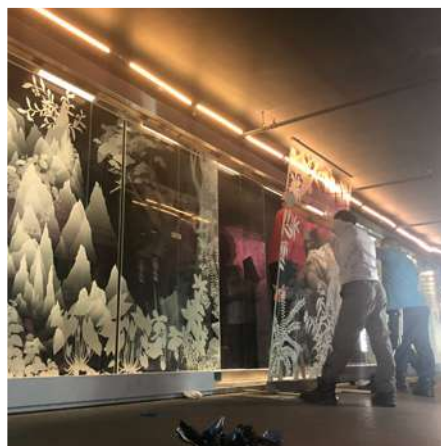
-

Architect

-

[- Go to Project Web Page](#)

FEATURE WALL



Cloud Forest. Gardens by the Bay Singapore

Softly illuminated 16-metre feature wall rose from an artwork by Sara Chong and was interpreted by our team into an elegant and stunning feature wall of 3 layers – combining modern and traditional techniques of digital printing and sandcarving.

Location

Singapore

Completed By

2018

Fabricated By

Synergraphic

Installed By

–

Glass Processes Used

Digital Printing, Sandcarving,
Lamination + Metal works

Specific Materials Used

Customized

Artist

Sara Chong

Designer

–

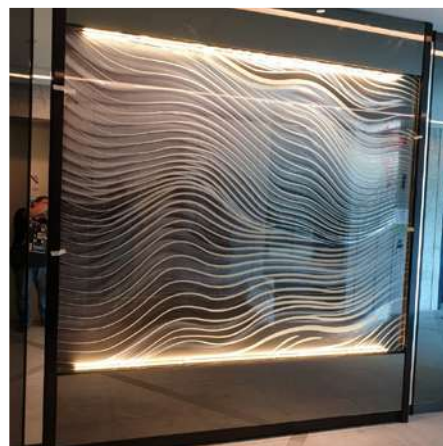
Architect

–

[- Download Full Brochure of This Project](#)

[- Go to Project Web Page](#)

FEATURE WALL



Kallang Riverside

Singapore

Lift Lobby Feature Artworks.

Location

Singapore

Completed By

2019

Fabricated By

Synergraphic

Installed By

-

Glass Processes Used

Digital Printing, Waterjet

Specific Materials Used

Customized

Artist

-

Designer

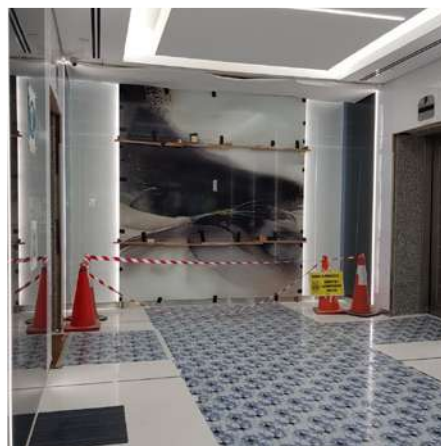
-

Architect

-

[- Go to Project Web Page](#)

FEATURE WALL



The Synergy

Singapore

Feature walls for 6 floors of lift lobbies. Final graphics created and developed in-house, printed in layers with gold accents.

Location

Singapore

Completed By

2018

Fabricated By

Synergraphic

Installed By

-

Glass Processes Used

Digital Printing with gold accents, Lamination

Specific Materials Used

Customized

Artist

-

Designer

-

Architect

-

[- Go to Project Web Page](#)

FEATURE WALL



Misty Winter Lake

Singapore

Custom image of a misty winter lake scene printed in monochrome hues on mirror, providing subtle reflection in a cosy dining space.

Location

Singapore

Completed By

2021

Fabricated By

Synergraphic

Installed By

-

Glass Processes Used

Digital Printing

Specific Materials Used

Misty Winter Lake
- Atmos Collection

Artist

-

Designer

-

Architect

-

[- Go to Project Web Page](#)

FEATURE WALL



Private Residence 04

Singapore

Graphic artwork developed by our graphic art team, which was then printed onto Italian Antique Mirrors, then hand-painted by artists for final finishing.

Location

Singapore

Completed By

2010

Fabricated By

Synergraphic

Installed By

-

Glass Processes Used

Digital Printing

Specific Materials Used

Customized

Artist

-

Designer

-

Architect

-

[- Go to Project Web Page](#)

FEATURE WALL



International Plaza Residences

Singapore

Location

Singapore

Completed By

2010

Fabricated By

Synergraphic

Installed By

-

Glass Processes Used

Digital Printing

Specific Materials Used

Customized

Artist

-

Designer

-

Architect

-

[- Go to Project Web Page](#)

FEATURE WALL



SMRT - Mountbatten Station

Singapore

Location

Singapore

Completed By

2010

Fabricated By

Synergraphic

Installed By

-

Glass Processes Used

Digital Printing

Specific Materials Used

Customized

Artist

-

Designer

-

Architect

-

[- Go to Project Web Page](#)

FEATURE WALL



SMRT - Dakota Station

Singapore

Location

Singapore

Completed By

2010

Fabricated By

Synergraphic

Installed By

-

Glass Processes Used

Digital Printing

Specific Materials Used

Customized

Artist

-

Designer

-

Architect

-

[- Go to Project Web Page](#)

FEATURE WALL



Wakuda Restaurant & Bar. Marina Bay Sands

Singapore

Fabricated and installed these glass panels for Wakuda Restaurant and Bar at Marina Bay Sands Singapore. Wakuda was created by two-MICHELIN-Starred Chef Tetsuya Wakuda and John Kunkel, CEO of 50 Eggs Hospitality. The restaurant's overall atmosphere captures the tension between traditional and modern Japan and offers excellent culinary beauty. Our glass panels supplement the restaurant's theme, with the use of antique mirrors with an interplay of golden and earth colors blended together.

Location

Singapore

Completed By

2022

Fabricated By

Synergraphic

Installed By

Synergraphic

Glass Processes Used

-

Specific Materials Used

-

Artist

-

Designer

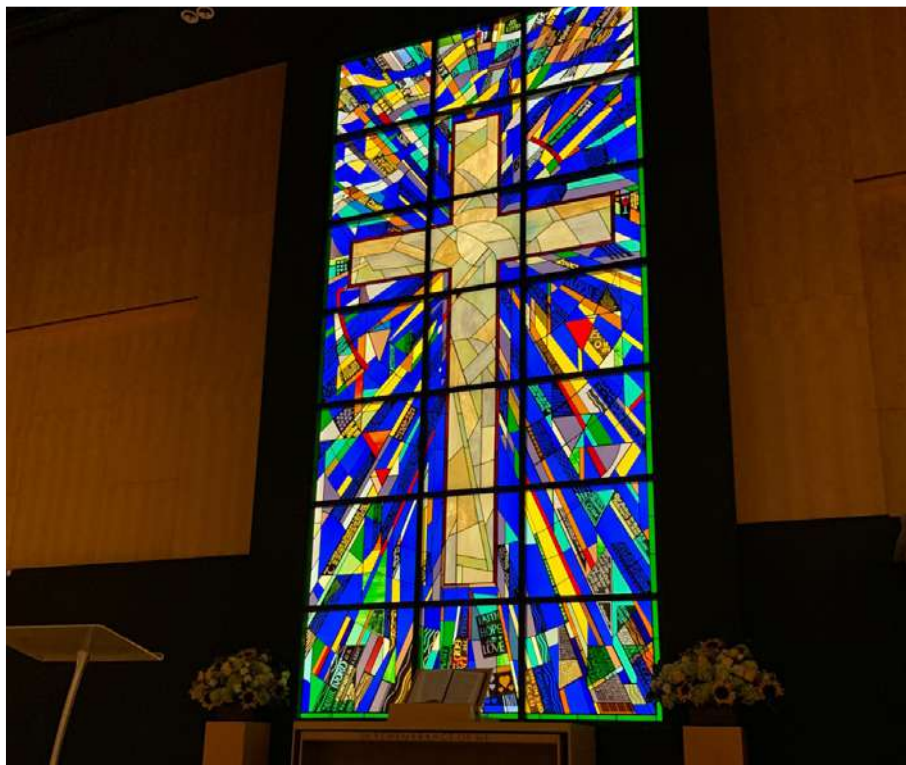
-

Architect

-

[- Go to Project Web Page](#)

FEATURE WALL



Christ Methodist Church

Singapore

Location

Singapore

Completed By

-

Fabricated By

Synergraphic

Installed By

-

Glass Processes Used

Stained Glass

Specific Materials Used

Stained Glass

Artist

-

Designer

-

Architect

-

[- Go to Project Web Page](#)

FEATURE WALL



Takenaka

Singapore

Location	Completed By	Fabricated By
Singapore	-	Synergraphic
Installed By	Glass Processes Used	Specific Materials Used
-	-	-
Artist	Designer	Architect
-	-	-

- [Go to Project Web Page](#)

FEATURE WALL



Main Ballroom. Raffles Hotel

Singapore

Raffles Singapore has gained a mark of incomparable elegance in the Hospitality industry in Singapore and the region – not only because of its graceful service but also because of its striking architecture. We had the privilege to be part of some of its great interiors in their Main Ballroom. We created for them eglomise glass panels as feature walls and antique mirror for their doors and enclosures.

Location

Singapore

Completed By

–

Fabricated By

Synergraphic

Installed By

–

Glass Processes Used

Eglomise

Specific Materials Used

–

Artist

–

Designer

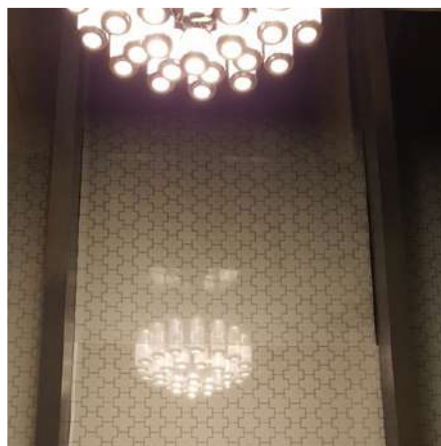
–

Architect

–

[- Go to Project Web Page](#)

FEATURE WALL



Hospitality Project. Farrer Park

Singapore

Location

Singapore

Completed By

2020

Fabricated By

Synergraphic

Installed By

Synergraphic

Glass Processes Used

Lami Art & Earth Tales

Specific Materials Used

Customized

Artist

-

Designer

-

Architect

-

[- Go to Project Web Page](#)

FEATURE WALL



Westin

Singapore

Location

Singapore

Completed By

-

Fabricated By

Synergraphic

Installed By

-

Glass Processes Used

-

Specific Materials Used

-

Artist

-

Designer

-

Architect

-

- [Go to Project Web Page](#)

FEATURE WALL



Queen's Wharf

Singapore

Location

Singapore

Completed By

-

Fabricated By

Synergraphic

Installed By

-

Glass Processes Used

-

Specific Materials Used

-

Artist

-

Designer

-

Architect

-

[- Go to Project Web Page](#)

FEATURE WALL



Sweet Spot

Singapore

Location

Singapore

Completed By

-

Fabricated By

Synergraphic

Installed By

-

Glass Processes Used

-

Specific Materials Used

-

Artist

-

Designer

-

Architect

-

[- Go to Project Web Page](#)

FEATURE WALL



Private Residence O2

Singapore

Location

Singapore

Completed By

-

Fabricated By

Synergraphic

Installed By

-

Glass Processes Used

-

Specific Materials Used

-

Artist

-

Designer

-

Architect

-

[- Go to Project Web Page](#)

FEATURE WALL



Private Residence O3

Singapore

Location

Singapore

Completed By

-

Fabricated By

Synergraphic

Installed By

-

Glass Processes Used

Digital Printing

Specific Materials Used

Customized

Artist

-

Designer

-

Architect

-

[- Go to Project Web Page](#)

FEATURE WALL



National University of Singapore

Singapore

Laminated feature wall

Location

Singapore

Completed By

-

Fabricated By

Synergraphic

Installed By

-

Glass Processes Used

Laminated

Specific Materials Used

-

Artist

-

Designer

-

Architect

-

- [Go to Project Web Page](#)

FEATURE WALL



DSO National Laboratories

Singapore

Location

Singapore

Completed By

-

Fabricated By

Synergraphic

Installed By

-

Glass Processes Used

-

Specific Materials Used

-

Artist

-

Designer

-

Architect

-

- [Go to Project Web Page](#)

FEATURE WALL



Kempinski

Singapore

Location

Singapore

Completed By

-

Fabricated By

Synergraphic

Installed By

-

Glass Processes Used

-

Specific Materials Used

-

Artist

-

Designer

-

Architect

-

- [Go to Project Web Page](#)

FEATURE WALL



T2E

Singapore

Location

Singapore

Completed By

-

Fabricated By

Synergraphic

Installed By

-

Glass Processes Used

-

Specific Materials Used

-

Artist

-

Designer

-

Architect

-

[- Go to Project Web Page](#)

FEATURE WALL



81 Palace Hotel

Singapore

Location

Singapore

Completed By

2023

Fabricated By

Synergraphic

Installed By

Synergraphic

Glass Processes Used

-

Specific Materials Used

-

Artist

-

Designer

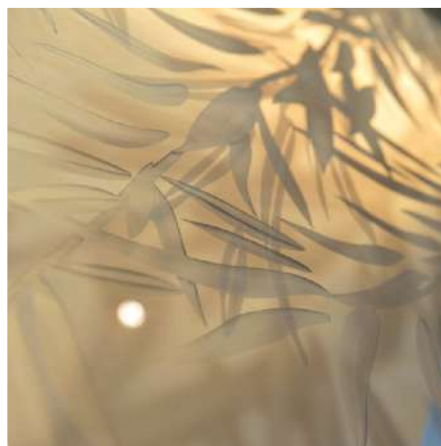
-

Architect

-

[- Go to Project Web Page](#)

FEATURE WINDOW



Misty Willow

Singapore

Designed and engineered to be a subtle, yet impressive feature, the “Misty Willow” casts an illusion of a willow tree sitting just outside the window of the dining area.

Location

Singapore

Completed By

2010

Fabricated By

Synergraphic

Installed By

-

*Glass Processes Used*Digital Printing, Sandcarving,
Lamination*Specific Materials Used*

Customized

Artist

-

Designer

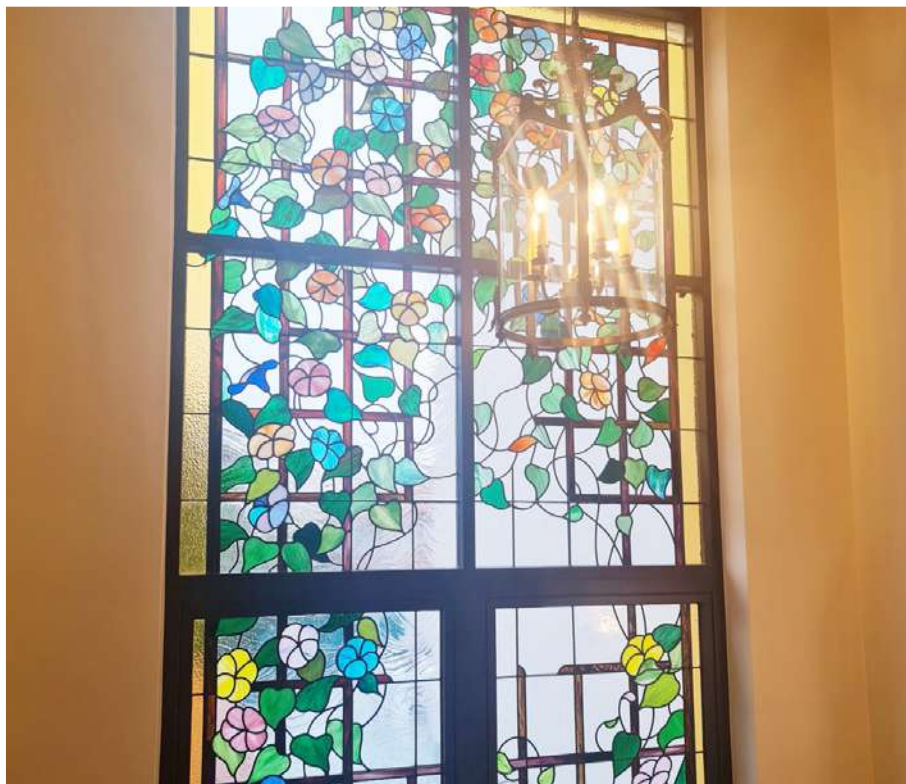
-

Architect

-

[- Go to Project Web Page](#)

FEATURE WINDOW



Private Residence. Chestnut Drive

Singapore

Location

Singapore

Completed By

-

Fabricated By

Synergraphic

Installed By

-

Glass Processes Used

-

Specific Materials Used

-

Artist

-

Designer

-

Architect

-

[- Go to Project Web Page](#)

DIVIDER



KTV Lounge

Singapore

Artist-painted glass showing a perfect mix of colours for a musically-inclined space. This artistic glass partition effectively supplements the vibrant atmosphere of a KTV and serves the purpose of providing privacy in a creative way.

Location

Singapore

Completed By

2020

Fabricated By

Synergraphic

Installed By

-

Glass Processes Used

Artisan-painted and
textured, Laminated,
Digital Print

Specific Materials Used

Customized

Artist

-

Designer

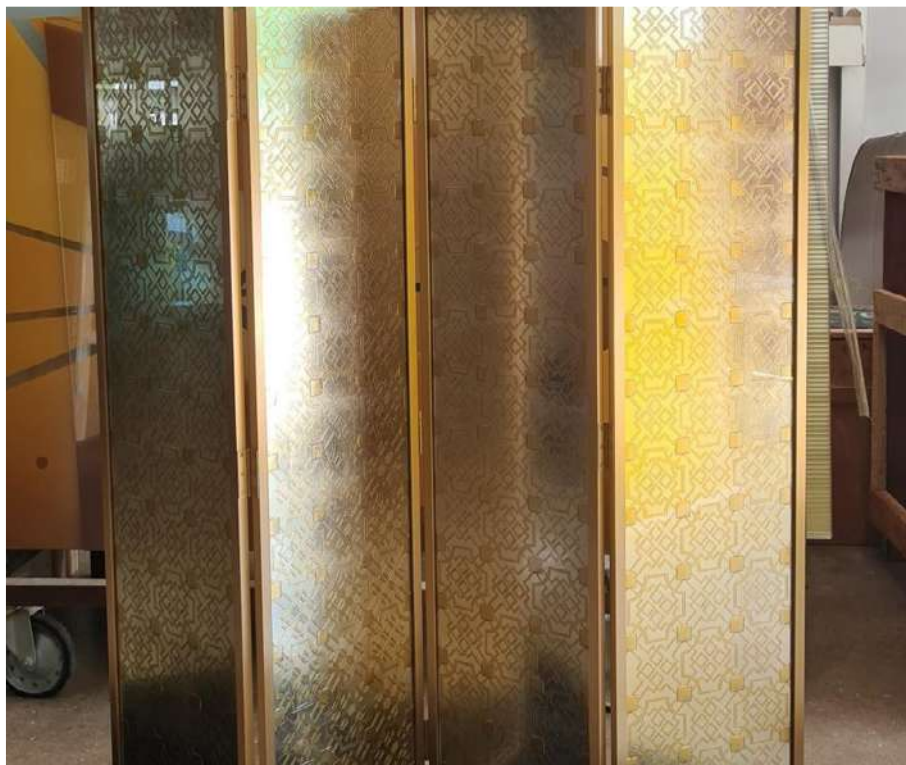
-

Architect

-

[- Go to Project Web Page](#)

DIVIDER



The Londoner

Macau

A free-standing screen made of metal and glass that was opaque and viewable from both sides. The design was to be a subtle pattern in a tone-on-tone color scheme of champagne gold.

Location

Macau

Completed By

2020

Fabricated By

Synergraphic

Installed By

-

Glass Processes Used

Sandcarving,
Painting, Gilding

Specific Materials Used

Customized

Artist

-

Designer

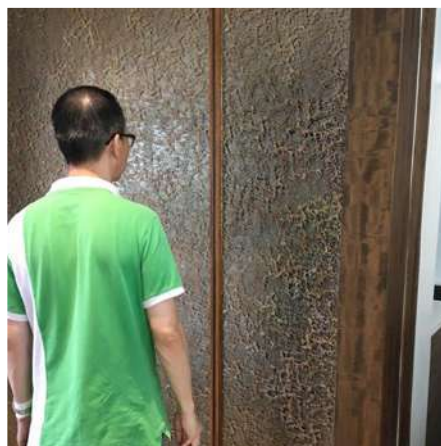
-

Architect

-

[- Go to Project Web Page](#)

DIVIDER



Private Residence. Leedon Residences

Singapore

Location

Singapore

Completed By

2021

Fabricated By

Synergraphic

Installed By

Synergraphic

Glass Processes Used

Lami Art

Specific Materials Used

Acapulco mirror back
with customized bronze finish

Artist

-

Designer

-

Architect

-

[- Go to Project Web Page](#)

DIVIDER



Palm Frond Panels

Taipei

Location

Taipei

Completed By

2022

Fabricated By

Synergraphic

Installed By

-

Glass Processes Used

-

Specific Materials Used

-

Artist

Lisa Stimpson

Designer

Lilian Wu Stu

Architect

-

[- Go to Project Web Page](#)

PANEL



Yi Restaurant. Raffles Hotel

Singapore

Location

Singapore

Completed By

-

Fabricated By

Synergraphic

Installed By

-

*Glass Processes Used*Chinoiserie artwork printed
on tinted glass panels,
complete with metal frames*Specific Materials Used*

Customized

Artist

-

Designer

-

Architect

-

[- Go to Project Web Page](#)

LIFT LOBBY



Singapore Land Tower

Singapore

-

Location

Singapore

Completed By

2023

Fabricated By

Synergraphic

Installed By

-

Glass Processes Used

-

Specific Materials Used

-

Artist

-

Designer

-

Architect

-

[- Go to Project Web Page](#)

LIFT LOBBY



Leedon Green Condo

Singapore

Location

Singapore

Completed By

2023

Fabricated By

Synergraphic

Installed By

-

Glass Processes Used

-

Specific Materials Used

-

Artist

-

Designer

-

Architect

-

- [Go to Project Web Page](#)

LIFT LOBBY



Lift Lobby. South Beach Hotel

Singapore

Location

Singapore

Completed By

2018

Fabricated By

Synergraphic

Installed By

-

Glass Processes Used

-

Specific Materials Used

-

Artist

-

Designer

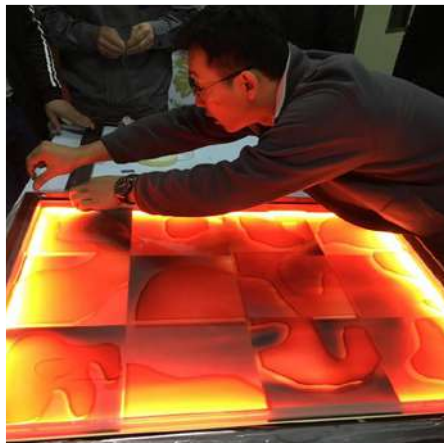
-

Architect

-

[- Go to Project Web Page](#)

LIFT LOBBY



MGM Grand Macau

Macau

Printed acrylic in multiple layers, this artwork for MGM Grand Macau lift lobbies is a sure feast to the eyes. The play of colours and strategic layering used is a sure way to portray depth and emotions.

Location

Macau

Completed By

2020

Fabricated By

Synergraphic

Installed By

-

Glass Processes Used

Laminated

Specific Materials Used

LamiArt Metal Mesh

Artist

-

Designer

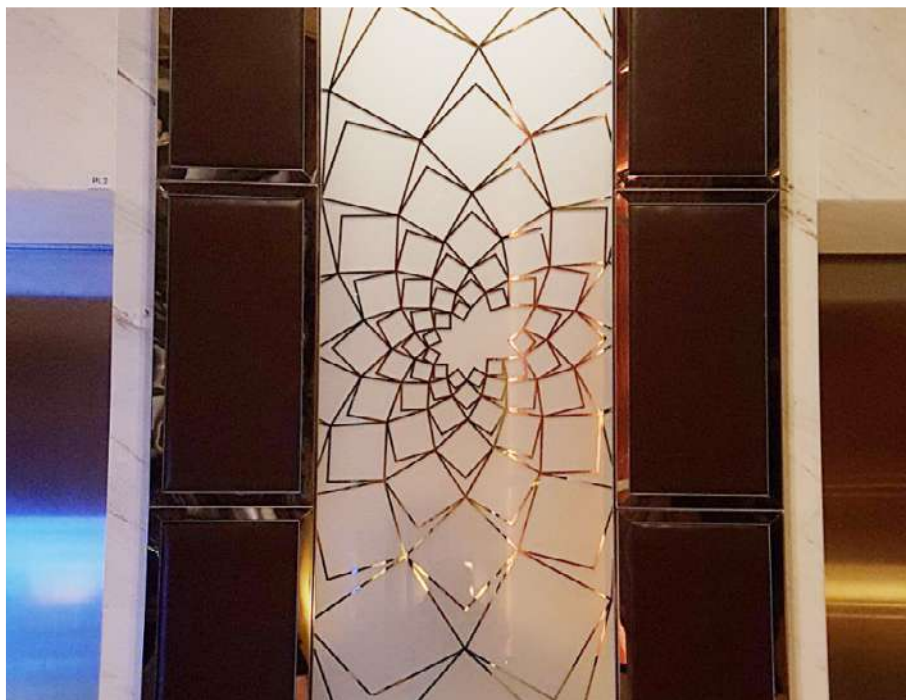
-

Architect

-

[- Go to Project Web Page](#)

LIFT LOBBY



Westin

Singapore

Location

Singapore

Completed By

-

Fabricated By

Synergraphic

Installed By

-

Glass Processes Used

-

Specific Materials Used

-

Artist

-

Designer

-

Architect

-

[- Go to Project Web Page](#)

LIFT LOBBY



Private Residence. Eden Residences

Singapore

Lift Lobby Feature Artworks. Graphic concept created and final artworks hand-drawn in-house, printed in layers of varying translucencies.

Location

Singapore

Completed By

2019

Fabricated By

Synergraphic

Installed By

-

Glass Processes Used

Artist-drawn, digital printed

Specific Materials Used

Customized

Artist

-

Designer

-

Architect

-

[- Go to Project Web Page](#)

LIFT LOBBY



ESR Changi Bizhub

Singapore

Printed acrylic in multiple layers, this artwork for MGM Grand Macau lift lobbies is a sure feast to the eyes. The play of colours and strategic layering used is a sure way to portray depth and emotions.

Location

Singapore

Completed By

2023

Fabricated By

Synergraphic

Installed By

-

*Glass Processes Used*Laminated Glass,
Digital Print*Specific Materials Used*

-

Artist

-

Designer

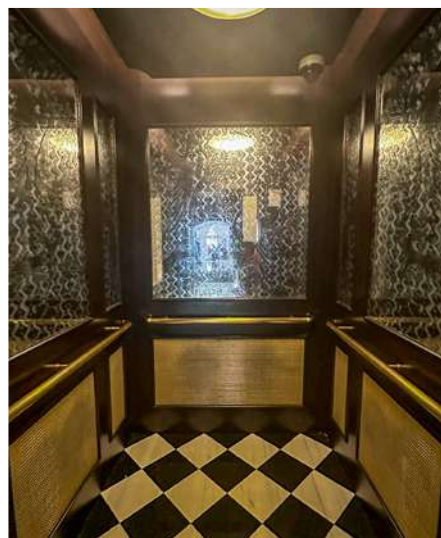
-

Architect

-

[- Go to Project Web Page](#)

LIFT CAR



Raffles Hotel

Singapore

Location

Singapore

Completed By

-

Fabricated By

Synergraphic

Installed By

-

*Glass Processes Used*Églomisé, Lamination &
Palladium Leaf*Specific Materials Used*

Customized

Artist

Lisa Stimpson

Designer

-

Architect

-

[- Go to Project Web Page](#)

LIFT CAR



Marina Bay Sands

Singapore

Fashioned the lift cars of Marina Bay Sands Singapore Tower 1 and 2 with these glass panel artworks. The design also carries and portrays the elegance and prestige that the Hotel is known for.

Location

Singapore

Completed By

2021

Fabricated By

Synergraphic

Installed By

-

Glass Processes Used

Digital printing with
artisanal gold leaf

Specific Materials Used

Customized

Artist

-

Designer

-

Architect

-

[- Go to Project Web Page](#)

LIFT CAR



Westin

Singapore

Location

Singapore

Completed By

-

Fabricated By

Synergraphic

Installed By

-

Glass Processes Used

-

Specific Materials Used

-

Artist

-

Designer

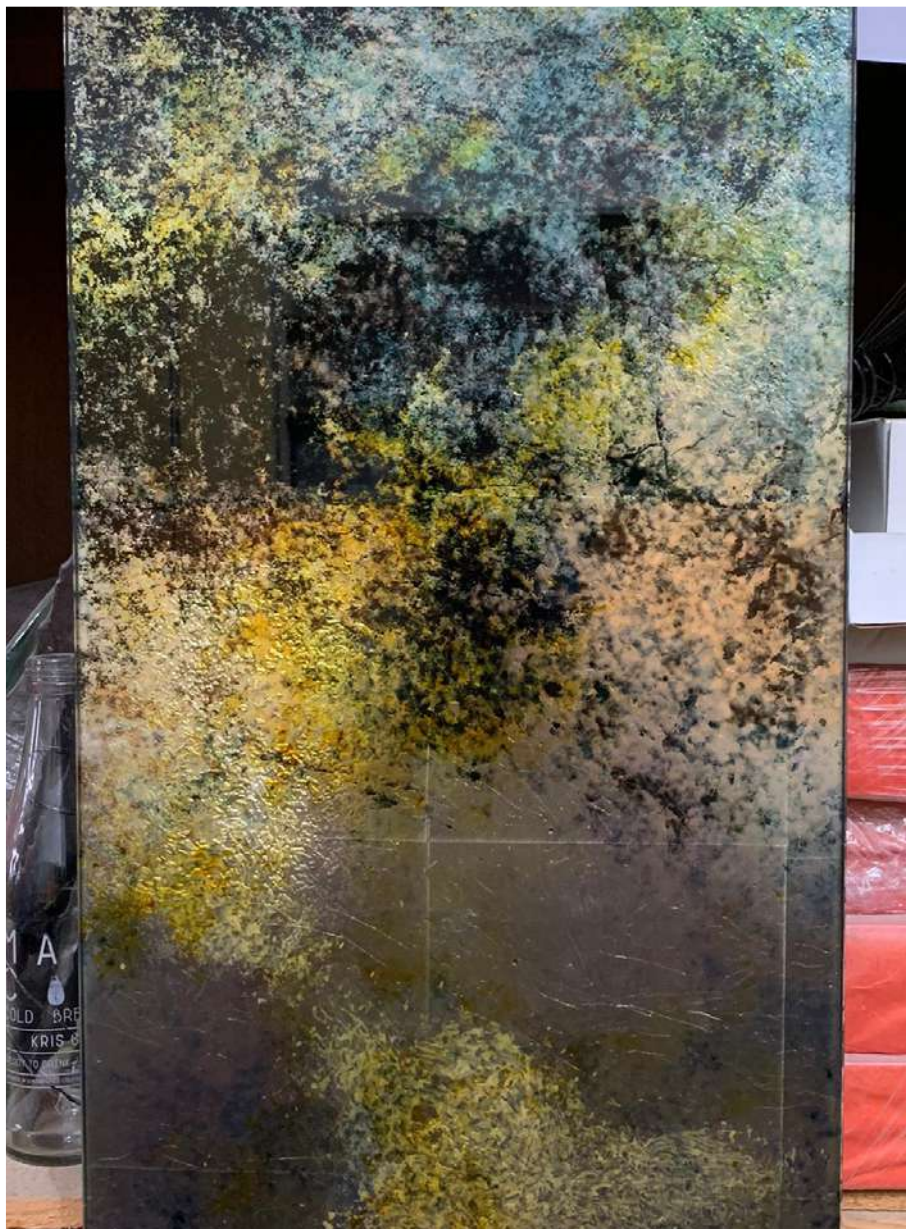
-

Architect

-

- [Go to Project Web Page](#)

LIFT CAR



Petit Jervois

Singapore

Location

Singapore

Completed By

2022

Fabricated By

Synergraphic

Installed By

-

Glass Processes Used

-

Specific Materials Used

Artisanal Finishes - Églomisé

Artist

-

Designer

-

Architect

RT&Q

[- Go to Project Web Page](#)

CANOPY



Private Residence Queen Astrid Park Singapore

Location

Singapore

Completed By

2023

Fabricated By

Synergraphic

Installed By

-

Glass Processes Used

-

Specific Materials Used

-

Artist

-

Designer

-

Architect

-

[- Go to Project Web Page](#)

RECEPTION FACADE



Reception Facade

Qingdao, China

Location

Qingdao, China

Completed By

2022

Fabricated By

Synergraphic

Installed By

-

Glass Processes Used

-

Specific Materials Used

Customized

Artist

Synergraphic

Designer

-

Architect

-

[- Go to Project Web Page](#)

RECEPTION FACADE



UOB Wealth Banking

Singapore

Location

Singapore

Completed By

2012

Fabricated By

Synergraphic

Installed By

-

*Glass Processes Used*Waterjet, UV Glue, Digital
Print, Lamination*Specific Materials Used*Stacked Glass –
Glass Elements*Artist*

-

Designer

Silverfox

Architect

-

[- Go to Project Web Page](#)

SHELVES



Quaich Bar. Hotel Intercontinental Singapore

Quaich Bar is one of the most exquisite whisky bars that you will find in Singapore. Formerly known as the Victoria Bar, it is the oldest bar in Singapore that has set the standards of whisky enjoyment and appreciation in the country. Our contribution to the bar's excellent interiors includes **glass cladding for their whisky shelves**, antique mirror made into a feature wall, and stained glass features.

<i>Location</i>	<i>Completed By</i>	<i>Fabricated By</i>
Singapore	-	Synergraphic
<i>Installed By</i>	<i>Glass Processes Used</i>	<i>Specific Materials Used</i>
Synergraphic	Glass Cladding	-
<i>Artist</i>	<i>Designer</i>	<i>Architect</i>
-	-	-

[- Go to Project Web Page](#)

STRUCTURAL ELEMENTS

Private Residence.
Thomson Green

Singapore

Location

Singapore

Completed By

-

Fabricated By

Synergraphic

Installed By

-

Glass Processes Used

-

Specific Materials Used

-

Artist

-

Designer

-

Architect

-

[- Go to Project Web Page](#)

STRUCTURAL ELEMENTS

DUO Residences.
Garden of Chimes

Singapore

Location

Singapore

Completed By

2017

Fabricated By

Synergraphic

Installed By

-

Glass Processes Used

-

Specific Materials Used

-

Artist

-

Designer

-

Architect

-

[- Go to Project Web Page](#)

WARDROBE



Private Residence O8

Singapore

Single Ply Lami Wardrobe*Location*

Singapore

Completed By

-

Fabricated By

Synergraphic

Installed By

-

Glass Processes Used

-

Specific Materials Used

-

Artist

-

Designer

-

Architect

-

[- Go to Project Web Page](#)

BAR COUNTER



National University of Singapore

Singapore

Location

Singapore

Completed By

-

Fabricated By

Synergraphic

Installed By

-

Glass Processes Used

-

Specific Materials Used

-

Artist

-

Designer

-

Architect

-

- [Go to Project Web Page](#)

COUNTERTOP



Eco Booth Singapore

Singapore

Location

Singapore

Completed By

2023

Fabricated By

Synergraphic

Installed By

Synergraphic

Glass Processes Used

-

Specific Materials Used

-

Artist

-

Designer

-

Architect

-

[- Go to Project Web Page](#)

BOARDROOM



National University of Singapore

Singapore

Glass whiteboard

Location

Singapore

Completed By

-

Fabricated By

Synergraphic

Installed By

-

Glass Processes Used

-

Specific Materials Used

-

Artist

-

Designer

-

Architect

-

- [Go to Project Web Page](#)

SPECIALTY



Private Residence. Hawaii Tower Singapore

Stainless steel kitchen doors, crystal rings, links and wall accents.

Location

Singapore

Completed By

2023

Fabricated By

Synergraphic

Installed By

-

Glass Processes Used

-

Specific Materials Used

Customized

Artist

-

Designer

-

Architect

-

[- Go to Project Web Page](#)

SPECIALTY



Private Residence 06

Singapore

Location

Singapore

Completed By

-

Fabricated By

Synergraphic

Installed By

-

Glass Processes Used

-

Specific Materials Used

Customized

Artist

-

Designer

-

Architect

-

[- Go to Project Web Page](#)

STRUCTURAL ELEMENTS



Raffles City Shopping Center

Singapore

Location

Singapore

Completed By

2008

Fabricated By

Synergraphic

Installed By

-

Glass Processes Used

Backpainted Glass

Specific Materials Used

Customized

Artist

-

Designer

-

Architect

-

[- Go to Project Web Page](#)

WORKSTATION



Bianca Board

Singapore

Glass whiteboard

Location

Singapore

Completed By

2021

Fabricated By

Synergraphic

Installed By

-

Glass Processes Used

-

Specific Materials Used

Bianca Board

Artist

-

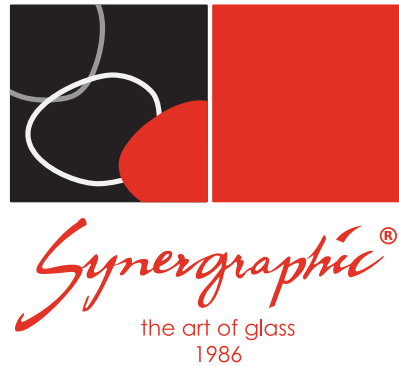
Designer

-

Architect

-

[- Go to Project Web Page](#)

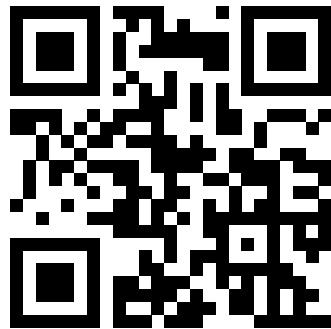


15 Kaki Bukit Road 4 #01-33/34 Bartley Biz Centre, Singapore 417808

Main Line: (65) 6546 4133 | Fax: (65) 6546 1707

E-mail: sales@synergraphic.com.sg

Visit our website:



synergraphic.com.sg

Check our project portfolio:



Project Portfolio